

# Money Row Green

Holyport • Berkshire • SL6 2ND

Guide Price: £1,295,000



coopers  
est 1986



# Money Row Green

Holyport • Berkshire • SL6 2ND

An impressive five bedroom, three bathroom detached house, extended and updated by the current owners to create a stylish and flexible layout perfectly suited to modern family living. Situated on Money Row Green, one of Holyport's most sought after roads, the property enjoys convenient access to a range of local amenities and is just a short walk from the highly regarded Holyport College and Primary School. The ground floor of the property comprises a spacious hallway with doors leading to a 15ft fifth bedroom/games room with an en-suite shower room, a 17ft garage, a downstairs W/C, and an 8ft utility room. There is a 20ft living room, which opens seamlessly onto a 26ft family/dining room and a 15ft kitchen. To the first floor is the 18ft main bedroom with fitted wardrobes and en-suite bathroom, 15ft second bedroom, 15ft third bedroom, 12ft fourth bedroom and family shower room. Outside there is ample off street parking with access to the garage, a large private rear garden, and an 18ft gym/summer house.

Five bedroom house

Detached

Extended

Immaculately kept

Sought after location

Walking distance to Holyport College

Surrounded by countryside and walking routes

18ft gym/summer house

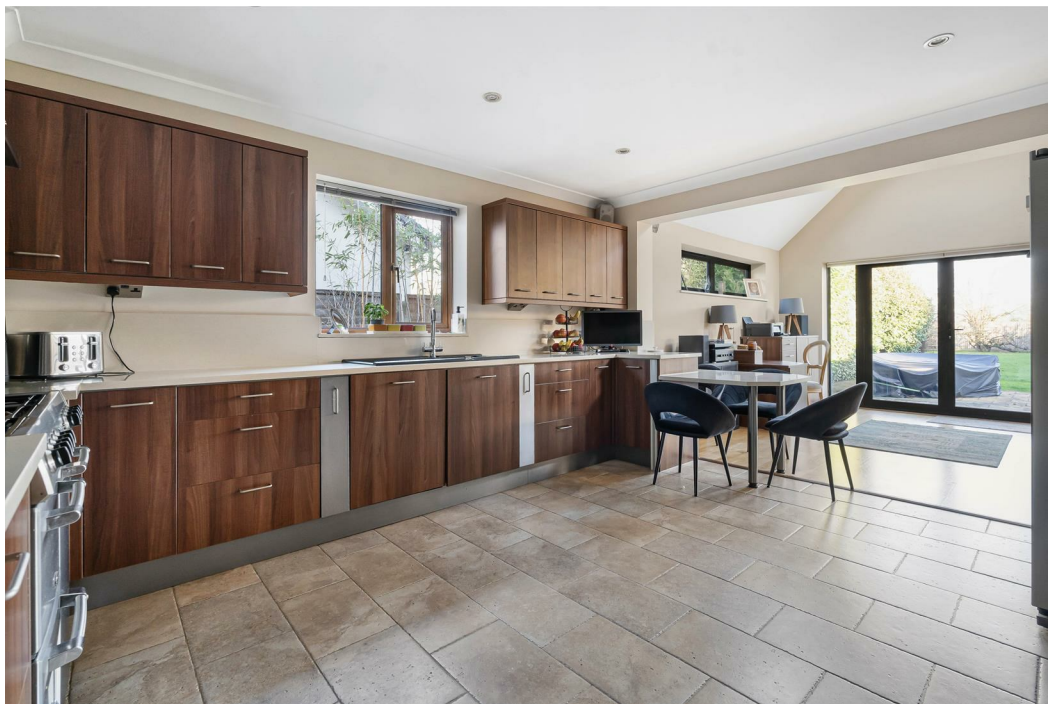
Large private rear garden

Off street parking

These particulars are intended as a guide and must not be relied upon as statements of fact. Your attention is drawn to the Important Notice on the last page.





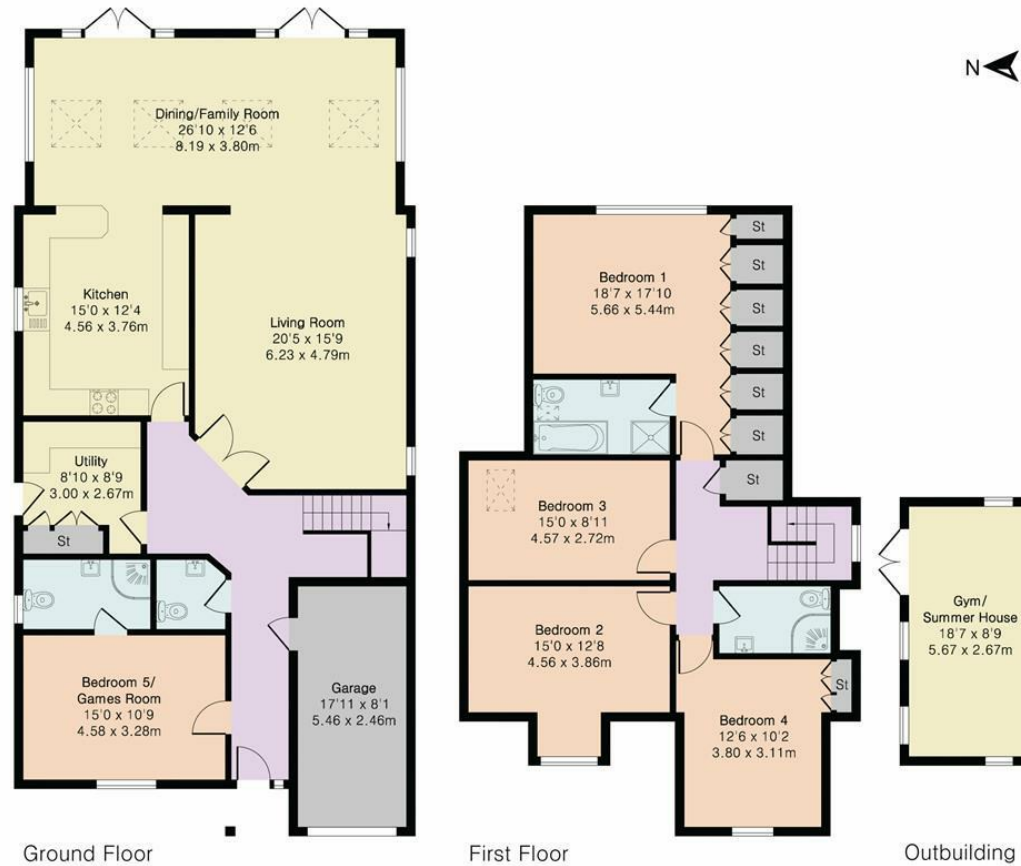




# Firside, Money Row Green, Holyport, Maidenhead, SL6

Approximate Area = 2690 sq ft / 249.8 sq m

For identification only - Not to scale



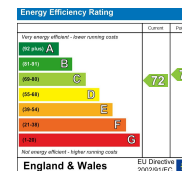
Floor plan produced in accordance with RICS Property Measurement 2nd Edition. Although Pink Plan Ltd ensures the highest level of accuracy, measurements of doors, windows and rooms are approximate and no responsibility is taken for error, omission or misstatement. These plans are for representation purposes only and no guarantee is given on the total square footage of the property within this plan. The figure icon is for initial guidance only and should not be relied on as a basis of valuation.



**coopers**  
est 1986

**42 Queen Street, Maidenhead,  
SL6 1HZ**  
maidenhead@coopersresidential.co.uk

**CoopersResidential.co.uk**



Important Notice: These particulars, whilst believed to be accurate are set out as a general outline only for guidance and do not constitute any part of an offer or contract. Intending purchasers should not rely on them as statements or representation of fact, but must satisfy themselves by inspection or otherwise has the authority to make or give any representation or warranty in respect of the property.